

ESTELA 100

GENERAL DATA

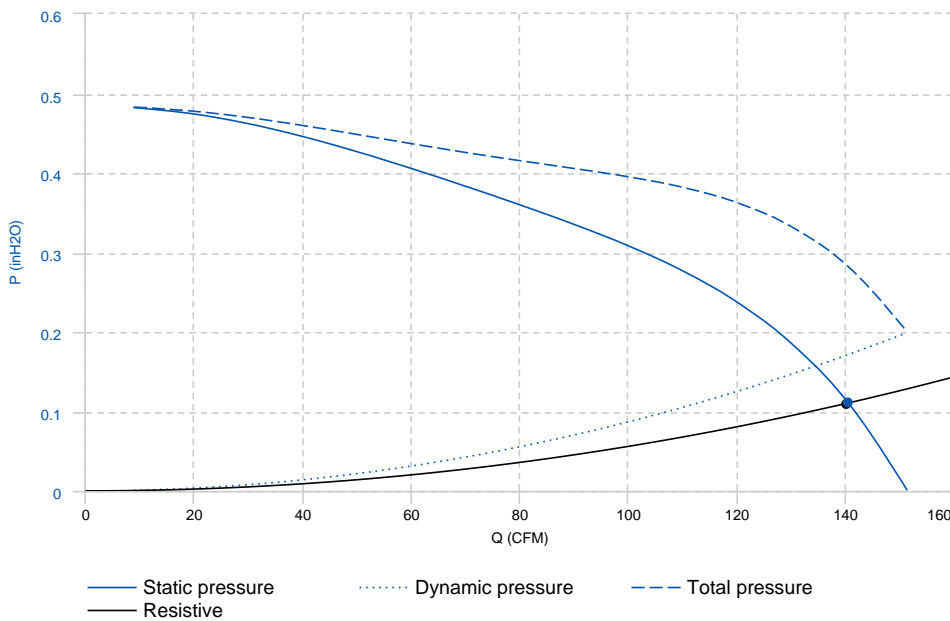


SILENT CEILING FAN

- Lightweight fan to install in false ceiling.
- Forward impeller.
- Capture of air through the square base made of ABS plastic.
- Extraction connection by circular mouth.
- Backdraft damper.
- Easy motor access for maintenance.
- Low sound level
- Motor 230V 60Hz

PERFORMANCE CURVE

20°C 0m 1.2 Kg/m³



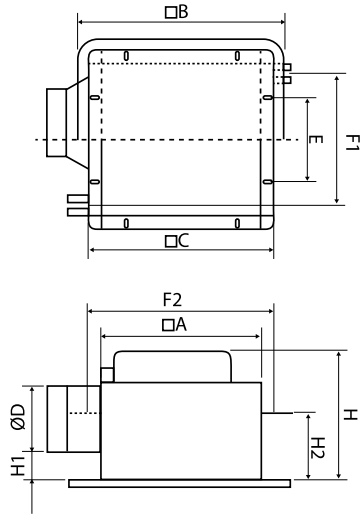
Design point	
Flow (CFM)	140.08
Pressure (inH2O)	0.11
Service point	
T.max (°C)	60
Q (CFM)	140.45
Ps (inH2O)	0.11
Pd (inH2O)	0.17
Pt (inH2O)	0.28
Speed (m/s)	8.44

TECHNICAL DATA

Fan

RPM	860	Approx. weight	3.5 kg	Max. Flow	153.03 CFM
-----	-----	----------------	--------	-----------	------------

DIMENSIONS



Dimensions (mm)

A		230	B		295	C		271	D		100	E		140
F1		193	F2		275	H		185	H1		35	H2		93

WIRING DIAGRAM

