

BT2 250

GENERAL DATA



CENTRIFUGAL IN LINE FAN WITH EXTERNAL ROTOR MOTOR

MANUFACTURING FEATURES

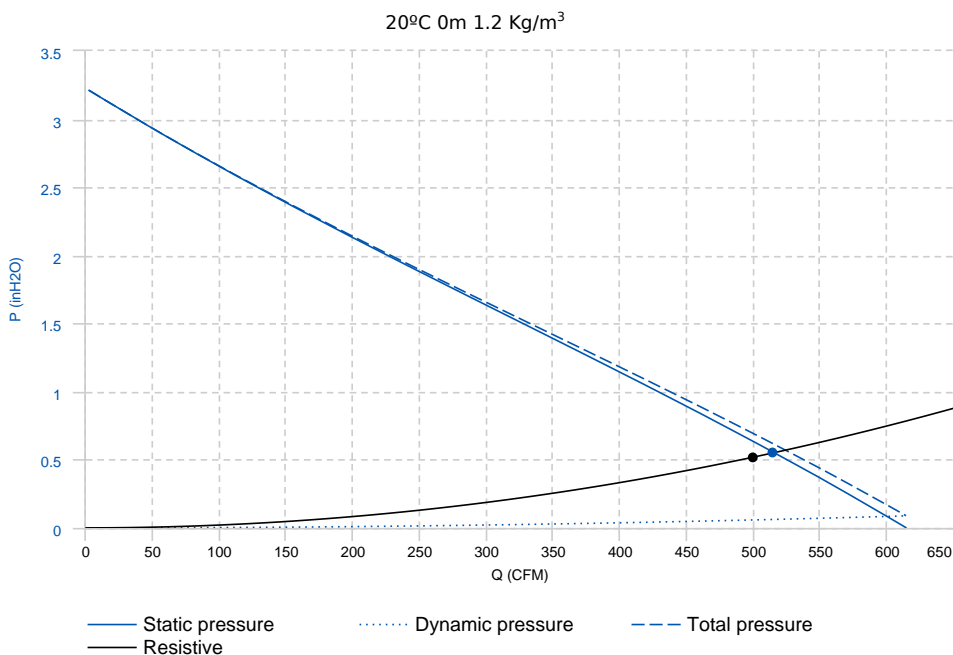
- Coated sheet housing.
- Impeller made of galvanized sheet (model sizes 160 to 315) or plastic ABS (model sizes 100 to 150).
- External wiring box.
- Asynchronous external rotor, with thermal protector and ball bearing permanently greased included. IP-44 protection and class F insulation according to DIN 40.050 h1. Standard voltage 230V 60Hz.

APPLICATIONS

Designed for inline installation, they are suitable for:

- Air renewal in bathrooms and small closed environments.
- Maximum working temperature in continuous:50°C.

PERFORMANCE CURVE



Design point	
Flow (CFM)	499.89
Pressure (inH2O)	0.52
Service point	
T.max (°C)	55
Q (CFM)	515.07
Ps (inH2O)	0.55
Pd (inH2O)	0.06
Pt (inH2O)	0.61
Speed (m/s)	5.07
Pabs (kW)	0.34

TECHNICAL DATA

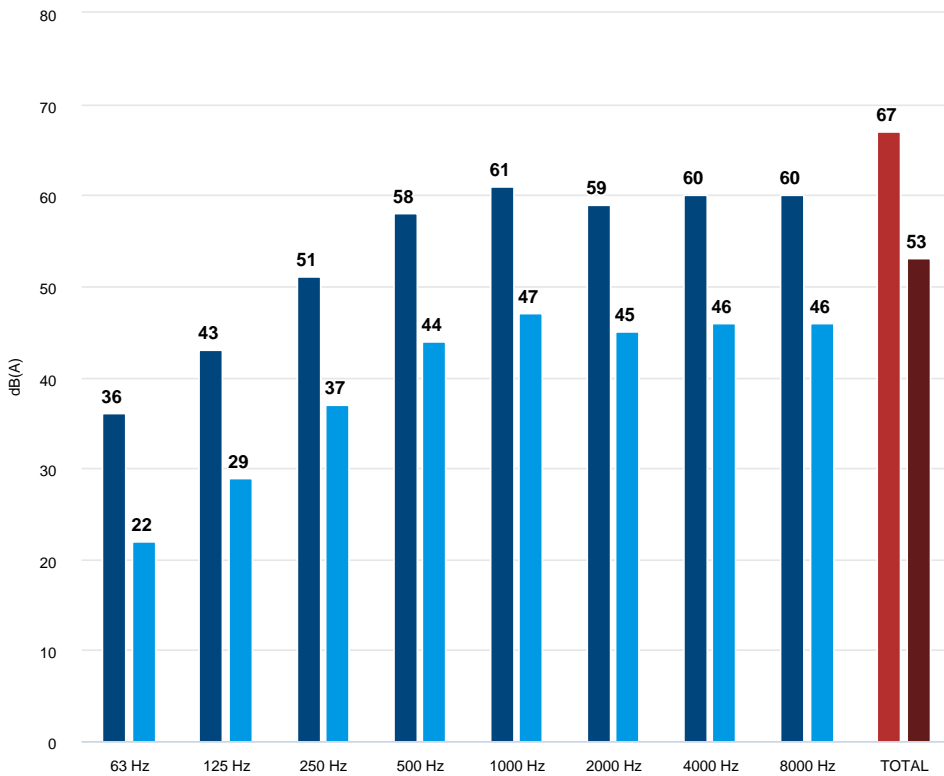
Fan

RPM	2340	Approx. weight	6 kg	Max. Flow	618.01 CFM
-----	------	----------------	------	-----------	------------

Motor

Power	0,207 kW	RPM	2340	Capacitor	5mF	I max. (230V)	0,93 A
-------	----------	-----	------	-----------	-----	---------------	--------

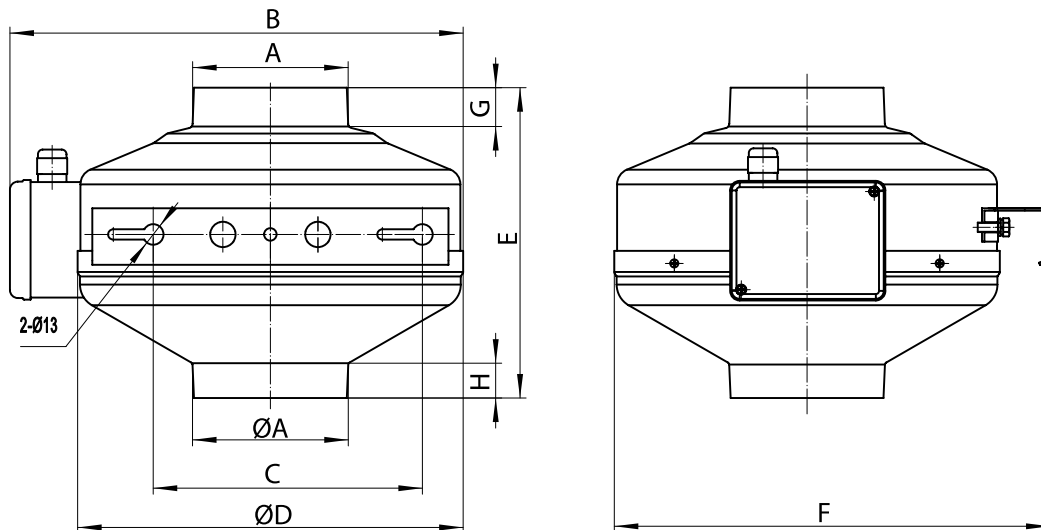
ACOUSTIC DATA



Sound power	
63 Hz	36
125 Hz	43
250 Hz	51
500 Hz	58
1000 Hz	61
2000 Hz	59
4000 Hz	60
8000 Hz	60
TOTAL	67

Sound pressure 1.5m (in)	
63 Hz	22
125 Hz	29
250 Hz	37
500 Hz	44
1000 Hz	47
2000 Hz	45
4000 Hz	46
8000 Hz	46
TOTAL	53

DIMENSIONS



Dimensions (mm)

A	247	B	377	C	170	D	333	E	216
F	365	G	25	H	36				

WIRING DIAGRAM

